

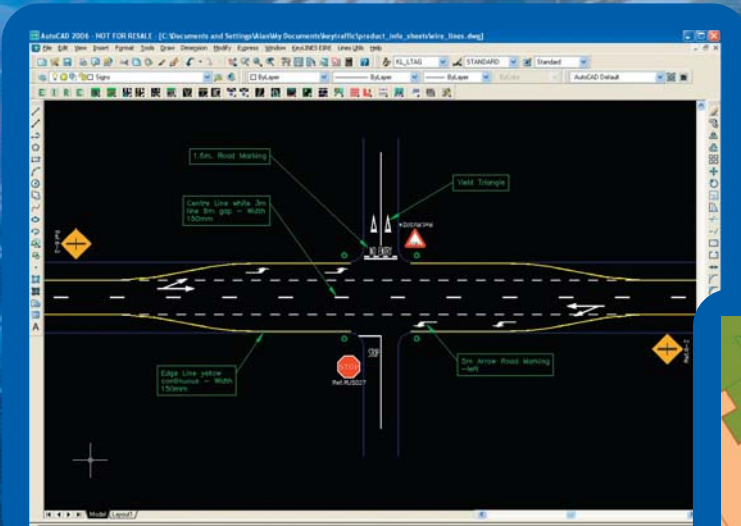
THE FAVOURED ROAD MARKING DESIGN SOFTWARE

KeyLINES Eire enables traffic and highway engineers to produce road marking and traffic management drawings quickly within the AutoCAD environment.

With it the complete range of Irish Road layouts and traffic management drawings, as set out by the Road Traffic (Signs) Regulations 1997, can be produced. There are also many functions to construct complex and multi-item markings with ease and speed.

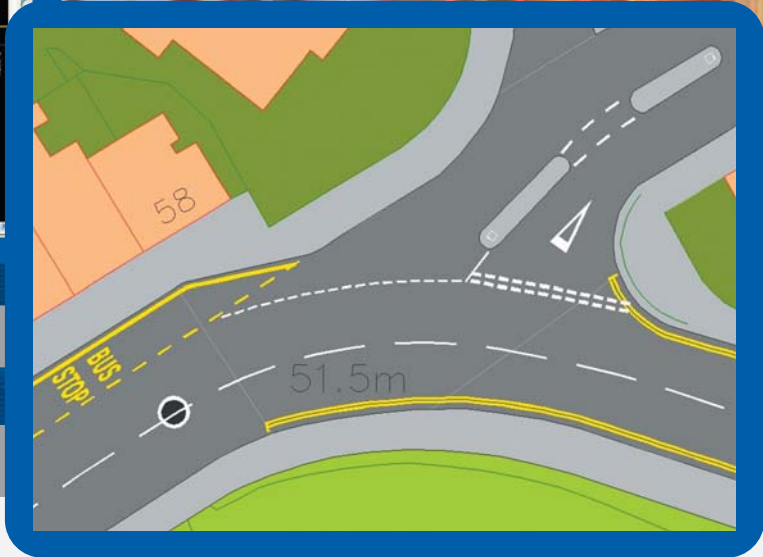


KEYLINES EIRE



Many types of road markings and other features can be drawn when using KeyLINES Eire

A number of different road marking linetypes drawn at a junction.



All drawings are produced in standard AutoCAD format and are therefore easily exchanged between departments and organisations.

KeyLINES Eire also has many utility functions such as; the fast display and manipulation of 3D views from the standard 2D drawing, automatic label creation and instant quantity extraction with cost estimates from the drawing.

KeyLINES Eire can draw a full range of linetypes from the regulations. All 'line plus gap' combinations are included as well as Urban and Rural modules, single and double continuous markings.

With KeyLINES Eire zig-zags for pedestrian crossings can be quickly drawn, both along a straight line and around a curve. Even complex zig-zags for a school entrance can be drawn in one simple quick routine. Also a full set of zebra crossing markings can be drawn with the minimum of effort, saving hours against drawing the markings individually.

“KeyLINES Eire includes really useful and time saving routines and has many extra items unique to the Irish road marking system.”

KEYLINES EIRE

KeyLINES Eire has a full symbols library including arrows, giveaway triangles, speed roundels and cycle markings. KeyLINES Eire also has tools to help centre roundabouts in the junction to ensure it remains within the minimum and maximum dimension stated by the regulations. Accurate yellow box markings are quickly drawn by specifying the four corner points.

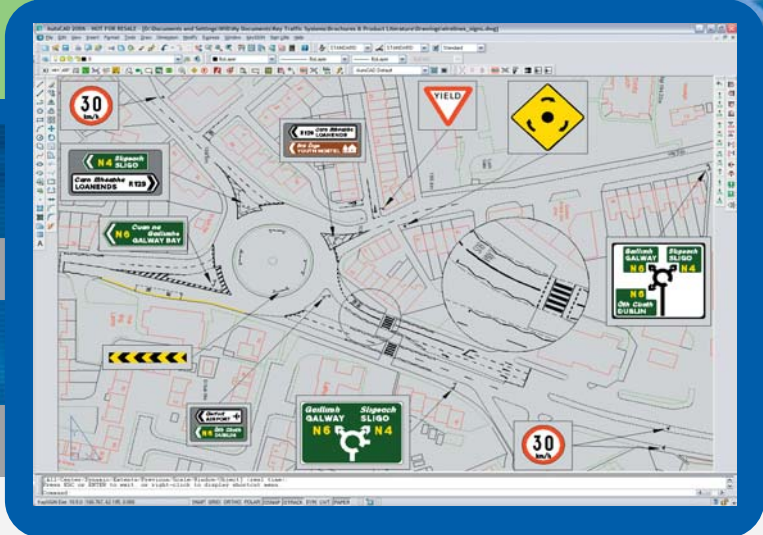
To help with green transport strategies all markings associated with bus lanes, bus stops, cycle tracks, cycle lanes and other bus or cycle facilities can be drawn. To assist in the design and consultation process when implementing traffic calming areas KeyLINES Eire has a range of calming features. These include: tapered humps, round top humps, cushions, plateau, speed roundels, coloured and specialist surfacing.

KeyLINES Eire allows production of drawings at any scale with any combination of features. Output from KeySIGN Eire can be included to produce professional quality output drawings.



Calming features drawn onto a plan

Full coloured signs from KeySIGN Eire can be inserted into KeyLINES Eire drawings



- Allows markings conforming to the Irish Road Traffic Sign Regulations to be drawn
- Provides tools to assist set out and alignment of markings
- Enables complex markings such as hatching, zig-zags and zebras to be created
- Quantities can be quickly extracted for estimates and Bill of Quantities (BoQ)
- Provides full control over colours and layers used
- Produces 3D images from 2D plans for public meetings or for safety audits

KEY TRAFFIC SYSTEMS
 ARDENCROFT COURT
 ARDENS GRAFTON
 ALCESTER
 WARWICKSHIRE
 B49 6DP
 T: 08451 303040
 F: 08451 303141
 E: info@keytraffic.com
 W: www.keytraffic.com

KeyLINES Eire is backed by Key Traffic Systems' full range of support services, including training, support and user group meetings together with Autodesk product and hardware sales.

