

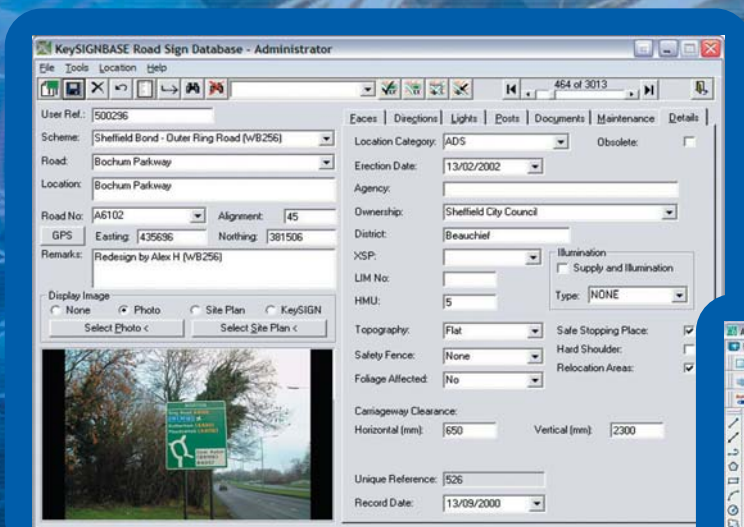
THE TOTAL ROAD SIGN ASSET MANAGEMENT PACKAGE

KeySIGNBASE road sign asset manager links the UK's leading KeySIGN traffic sign design system with Microsoft's Access database and the GIS capabilities of Autodesk Map. It provides a fully functional front end to a database enabling easy input of new sign records, search tools and maintenance scheduling.

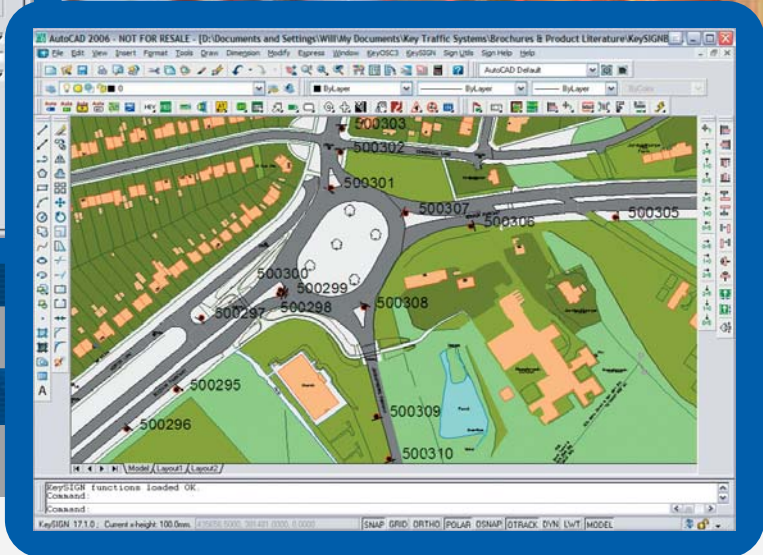
KeySIGNBASE is based on a carefully designed relational database, and provides a detailed and easy to use interface. New signing can be added directly from the KeySIGN design drawings, and existing assets added on-site using the GPS device interface.



KEYSIGNBASE



A complete set of information can be stored



Results of a graphical search

The information that can be held for each site and sign face is comprehensive, even to the level of detail of destination and route text; whether a site has a safe stopping place; or whether a particular sign face has a risk of being obscured by foliage growth.

Record navigation and searching allows any sign to be assessed. Routing studies can be made using the powerful search tool, to highlight signs containing specific destinations. Scheduled maintenance regimes can be set-up, and KeySIGNBASE will generate due items and create work sheets and site plans.

Within each record photographs and/or design drawings can be viewed in thumbnail or full screen, the sign face details are shown in a tabbed display.

Site plans can be generated automatically, and graphical searches for signs within any area can be made.

"I would recommend KeySIGNBASE to any Authority that wants to stay on top of their signing system."

Chris Galloway
Sheffield City Council

KEYSIGNBASE

KeySIGNBASE provides the complete maintenance solution coping easily with both scheduled and ad hoc activities.

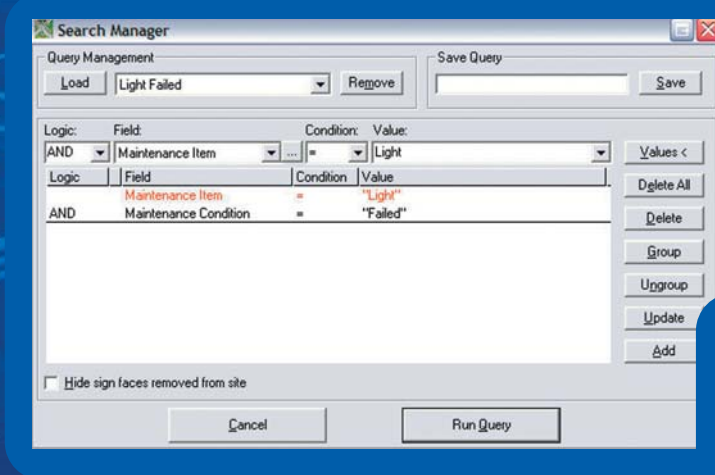
KeySIGNBASE is a GIS/Asset Management product designed to help keep accurate records of signs, inspections and maintenance activities.

A sophisticated search tool allows for effective 'data-mining' to maximize value, so that subsets of signs can be selected, for analysis aimed at focussing resources efficiently.

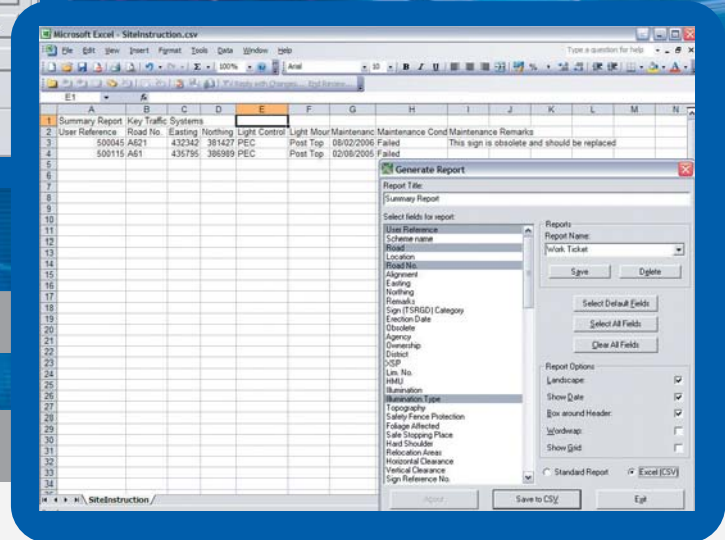
Any information for all or selected signs can be output to produce detailed work instruction sheets.

KeySIGNBASE can be used as a stand-alone asset management record program. But the program will make use of Autodesk Map where this is present, to display the sign locations on a map base.

KeySIGNBASE is also linked closely with KeySIGN, for the sign face design. Design data such as sign dimensions, colours etc. can be automatically transferred to the database



KeySIGNBASE graphical search facility



Asset management data can be exported

- Comprehensive list of fields available in many categories
- Display photographic images, KeySIGN designs, Ordnance Survey site plans and associated documents
- Compliant with the latest standards from the Highway Agency for Traffic Sign Maintenance.
- Searching facilities from OS base maps
- Automatic report generation and site plans to create work plans for maintenance.

KEY TRAFFIC SYSTEMS
 ARDENCROFT COURT
 ARDENS GRAFTON
 ALCESTER
 WARWICKSHIRE
 B49 6DP
 T: 08451 303040
 F: 08451 303141
 E: info@keytraffic.com
 W: www.keytraffic.com

KeySIGNBASE is backed by Key Traffic Systems' full range of support services, including training, support and user group meetings together with Autodesk product and hardware sales.

Autodesk
 Authorised Developer

Autodesk
 Authorised Unique Application Reseller

